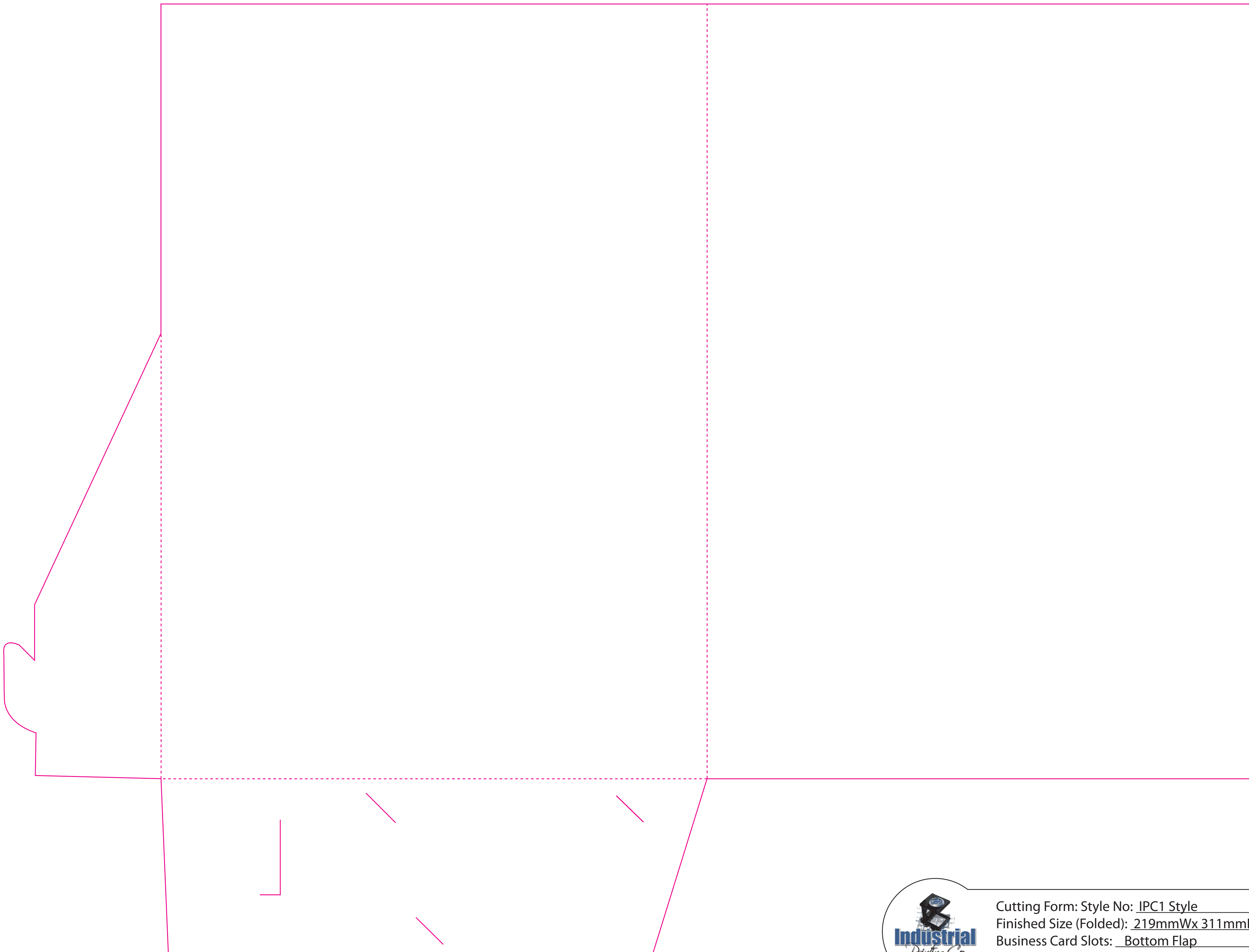



GRIP PRINT SIDE UP



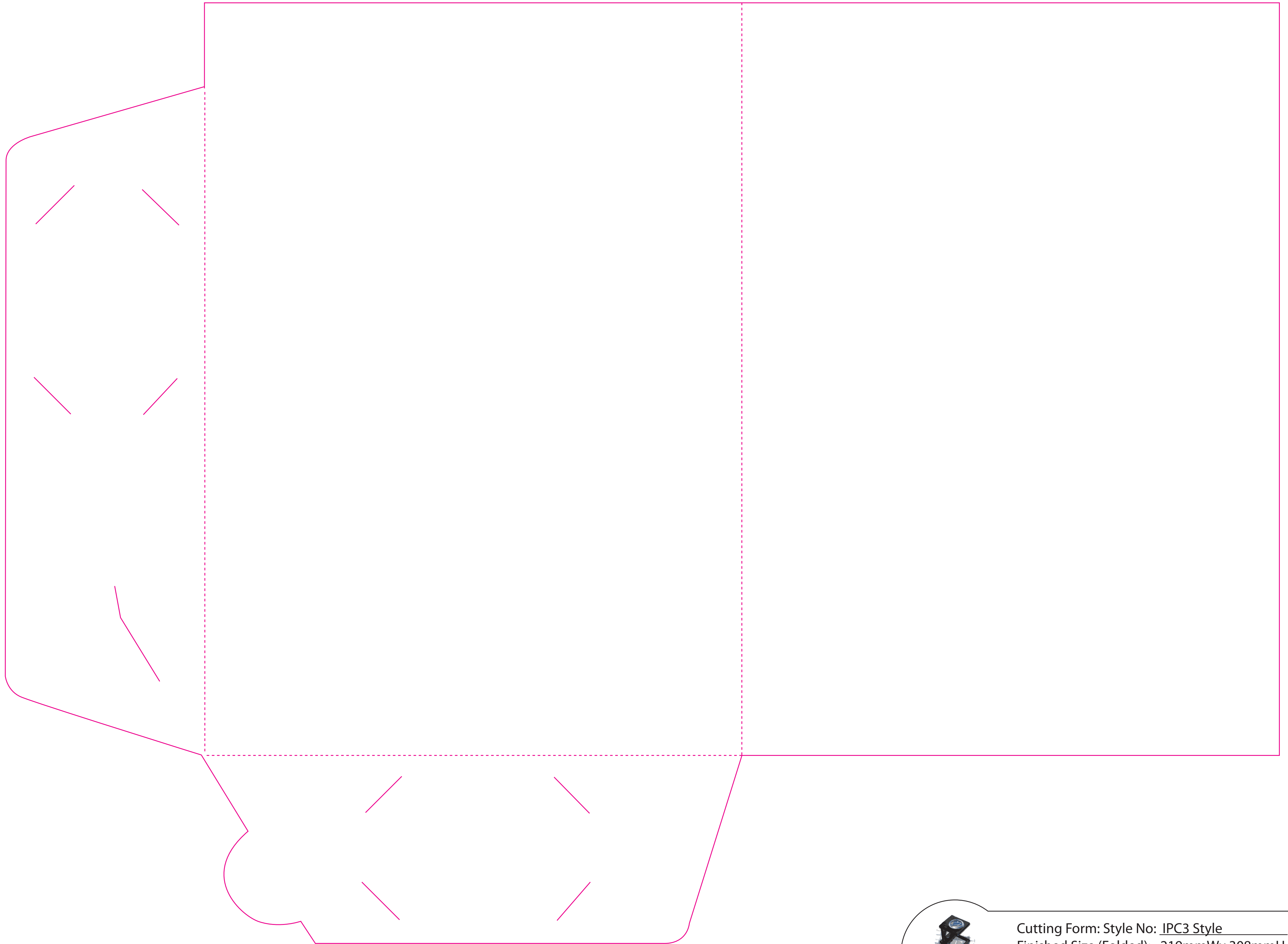
Cutting Form: Style No: IPC1 Style  
Finished Size (Folded): 219mmWx 311mmH  
Business Card Slots: Bottom Flap  
Centre Gusset: No


GRIP PRINT SIDE UP



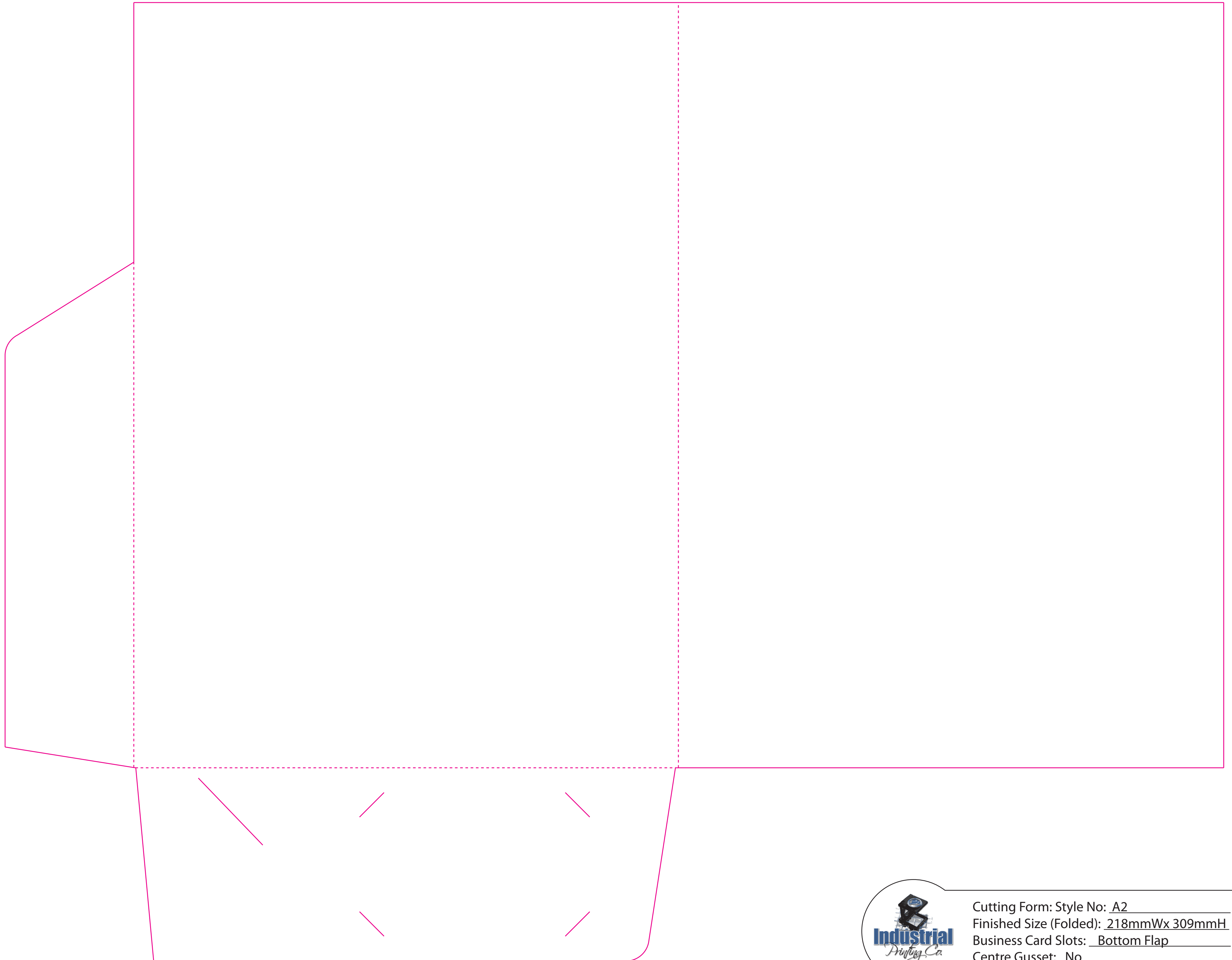
Cutting Form: Style No: IPC2 Style  
Finished Size (Folded): 228mmWx 306mmH  
Business Card Slots: Bottom Flap  
Centre Gusset: No

GRIP PRINT SIDE UP



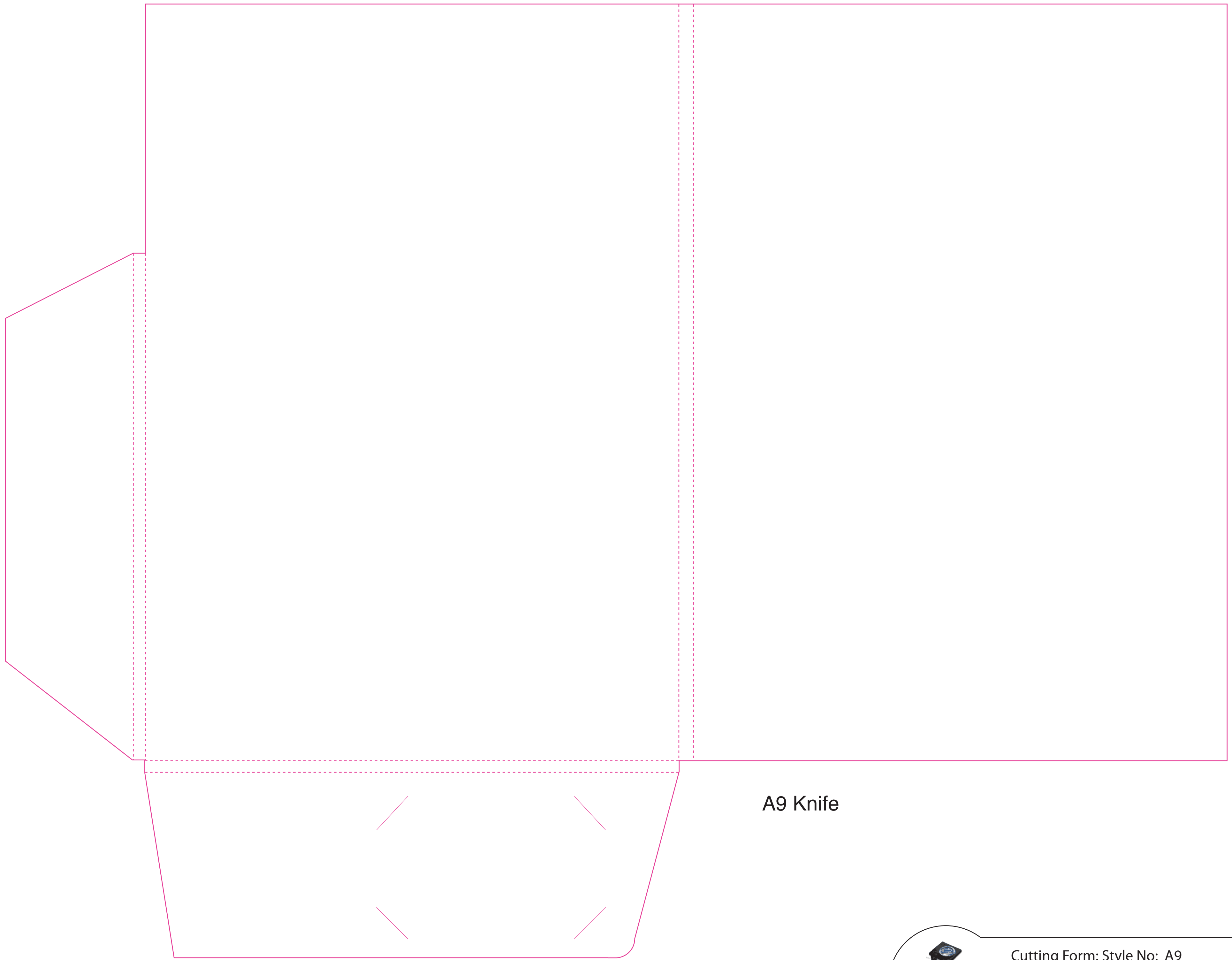
 Cutting Form: Style No: IPC3 Style  
Finished Size (Folded): 219mmWx 308mmH  
Business Card Slots: Bottom Flap + Side  
Centre Gusset: No

GRIP PRINT SIDE UP




Cutting Form: Style No: A2  
Finished Size (Folded): 218mmWx 309mmH  
Business Card Slots: Bottom Flap  
Centre Gusset: No

GRIP PRINT SIDE UP

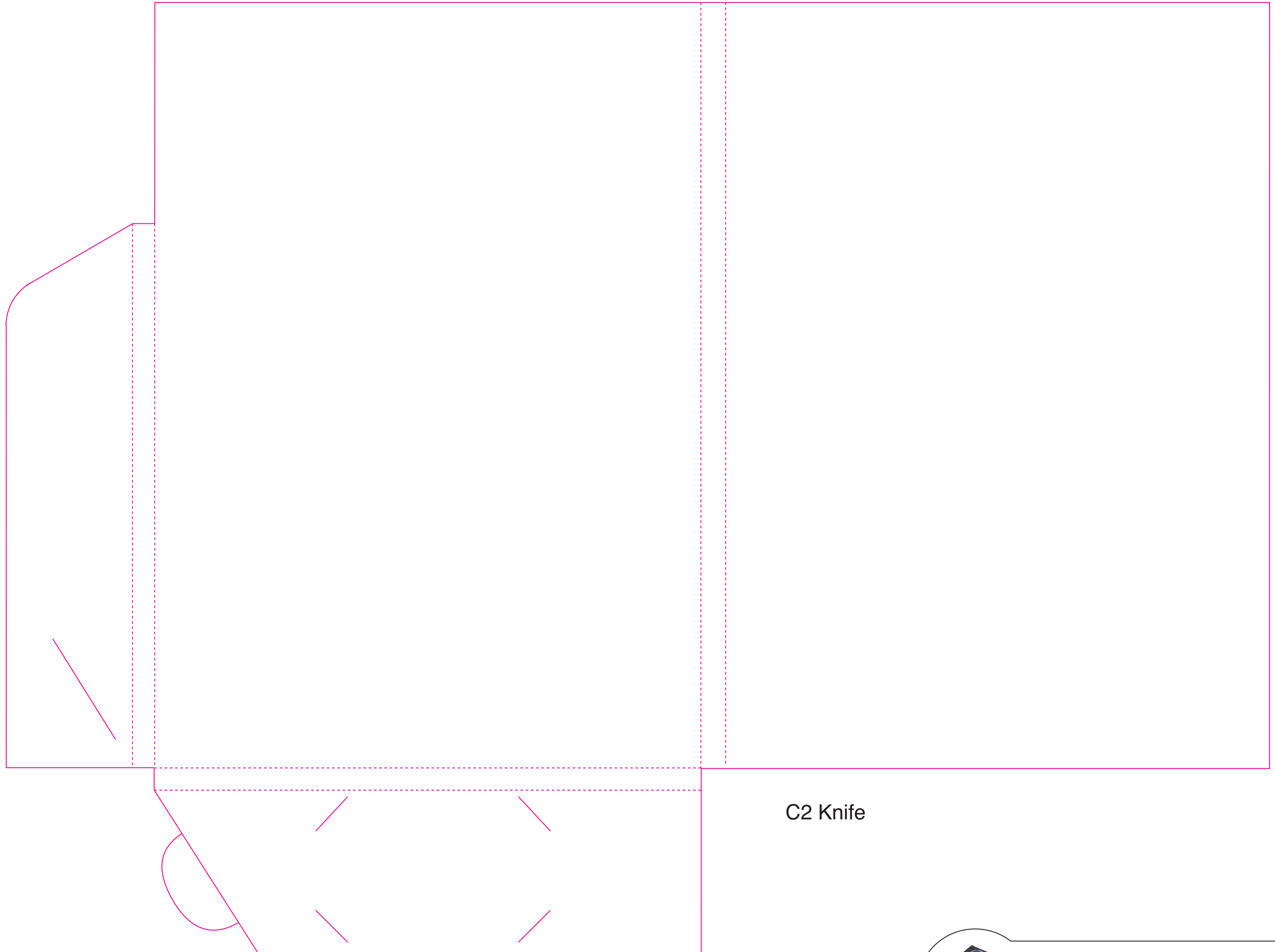


A9 Knife



Cutting Form: Style No: A9  
Finished Size (Folded): 221mmWx 313mmH  
Business Card Slots: Bottom Flap  
Centre Gusset: Yes

GRIP PRINT SIDE UP



C2 Knife



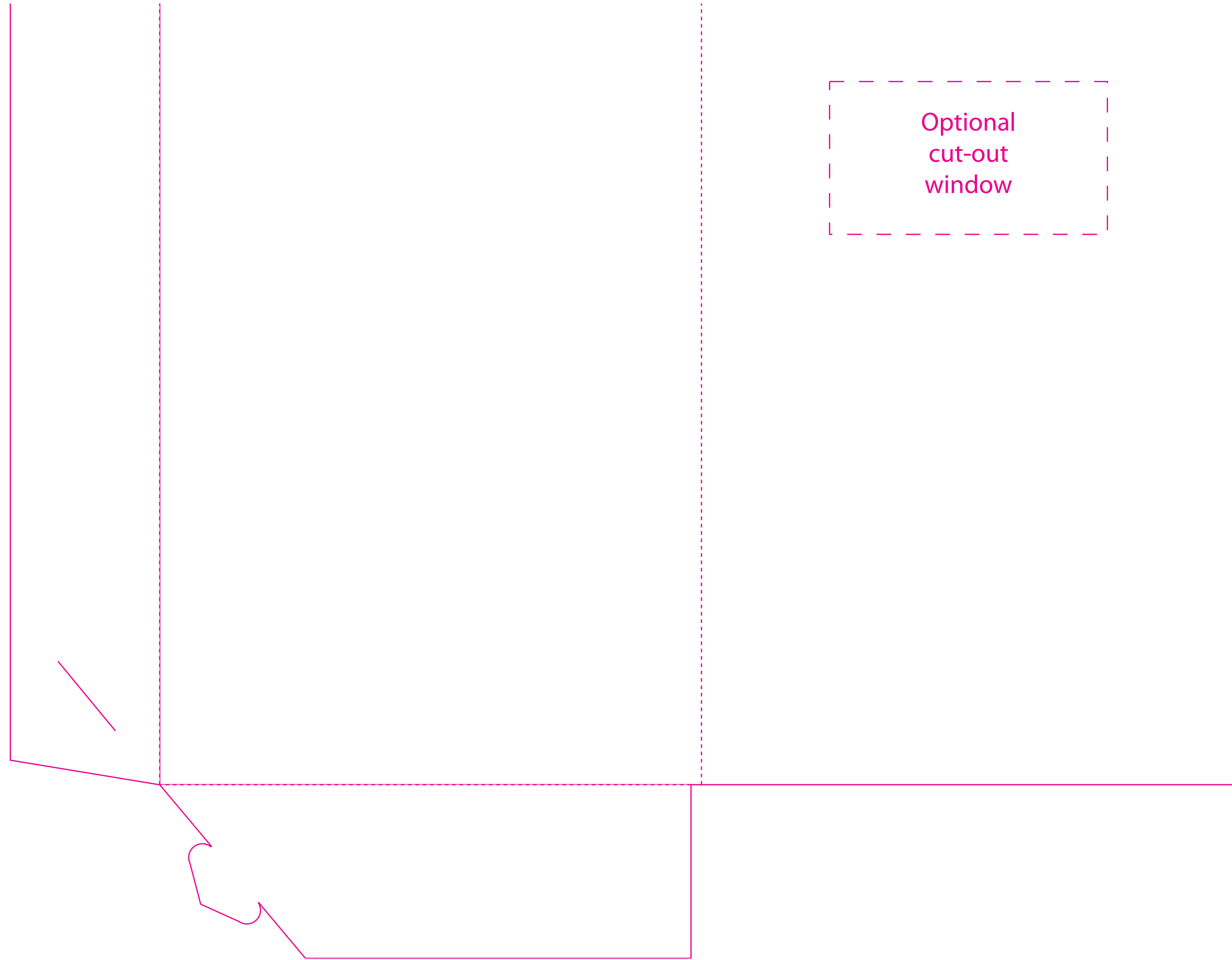
Cutting Form: Style No: C2  
Finished Size (Folded): 220mmWx 310mmH  
Business Card Slots: Bottom Flap  
Centre Gusset: Yes


GRIP PRINT SIDE UP



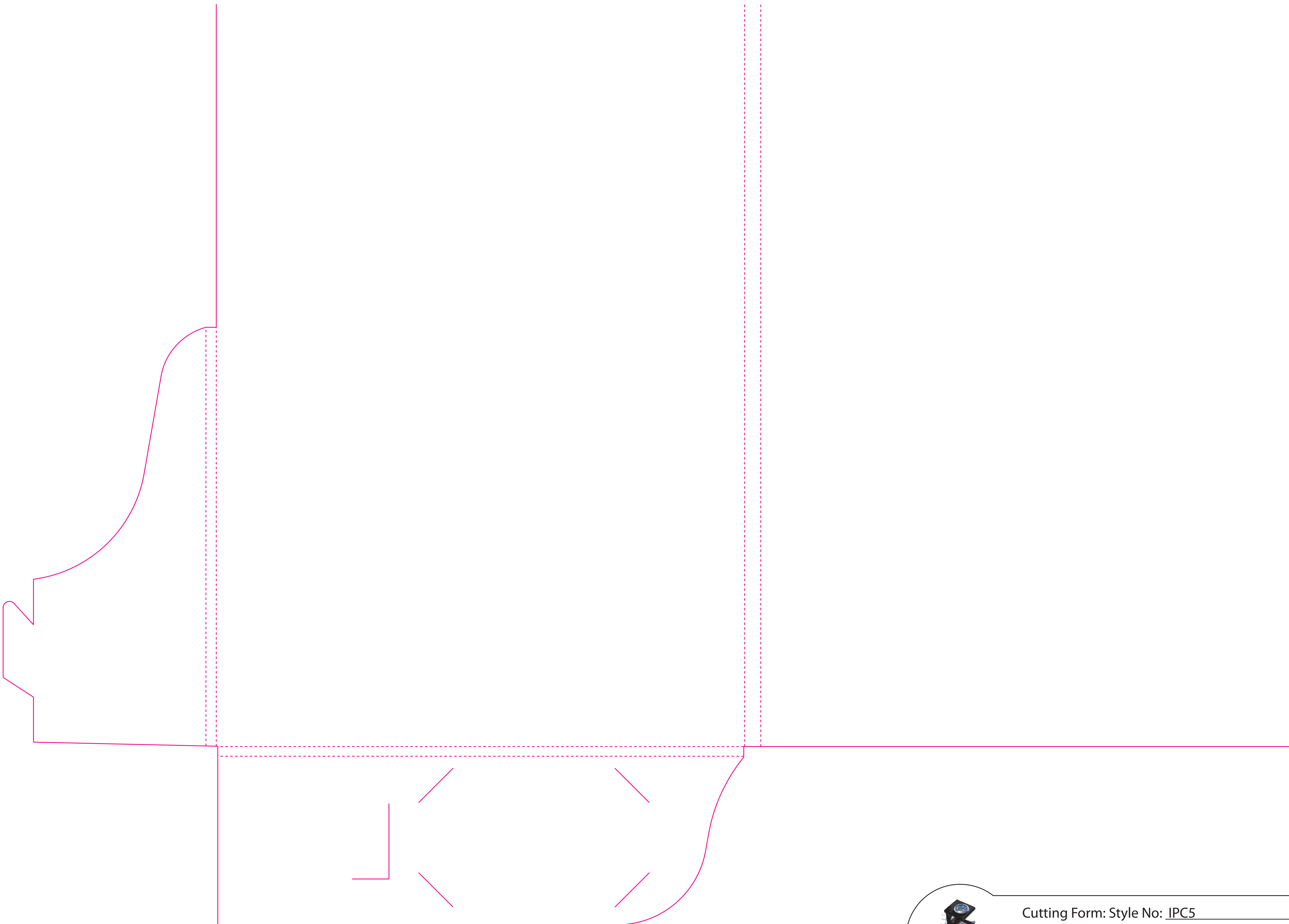
Cutting Form: Style No: Double Pocket  
Finished Size (Folded): 216mmWx 308mmH  
Business Card Slots: RHS Flap  
Centre Gusset: Yes


GRIP PRINT SIDE UP



 Cutting Form: Style No: A5 L2  
Finished Size (Folded): 155mmWx 220mmH  
Business Card Slots: No  
Centre Gusset: No

GRIP PRINT SIDE UP



 Cutting Form: Style No: IPC5  
Finished Size (Folded): 230mmWx 320mmH  
Business Card Slots: Bottom Flap  
Centre Gusset: Yes